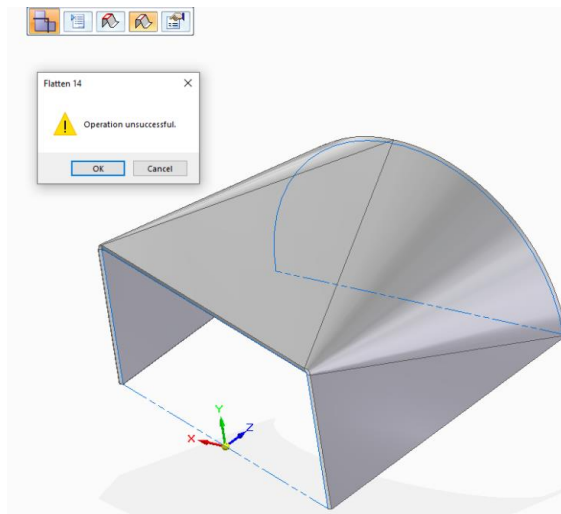


How to get around failure of a flatten of a lofted flange?

This Tech Tip looks at flattening a "Lofted Flange" that fails even though the geometry does not look problematic.



A possible workaround could be to enter the "Flatten" environment and to "Unbend" every bend individually. Often the order of selection will affect the success of the outcome.

The result will appear as a list of "Unbend" operations in Pathfinder.

