

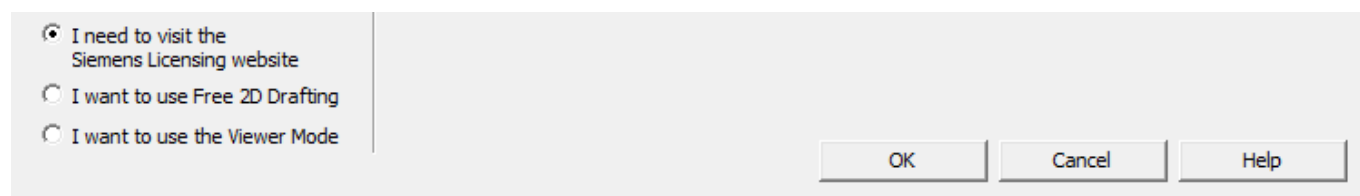
Setting Up CAM Pro

This Tech Tip looks at the steps you need to follow to ensure that your licencing is set up correctly.

Solid Edge CAM Pro 2.5 Axis is free with Solid Edge Foundation, Classic and Premium, but the licencing is not the same as Solid Edge. These instructions will guide you through the steps that you will need to follow to get it all going.

Step 1 – Obtaining the licence file

To use SE CAM Pro, you will need to download your new licence file as your original licence will likely only contain details about Solid Edge. Run the Solid Edge licence utility and click "I need to visit the Siemens Licensing website".



Click on "Passwords and License files"

Select the license management function from below

Emergency Passwords and License Files

Obtain temporary passwords or emergency license files for PLM software products. These will allow you to start your systems for a limited time. Your Customer Service Representative will be notified that you requested this service.

Passwords and License Files

Obtain password license files for PLM software products.

Change the Product option to Unigraphics NX (which is what the Solid Edge CAM Pro is based on) and version 2007 and click Continue.

Passwords and License Files

Select the product and release for which you want to generate a password or retrieve a license file. If you have more than one product on the installation, choose the product most frequently used.

Product: Unigraphics NX ▼
Version: 2007 ▼
Continue Cancel

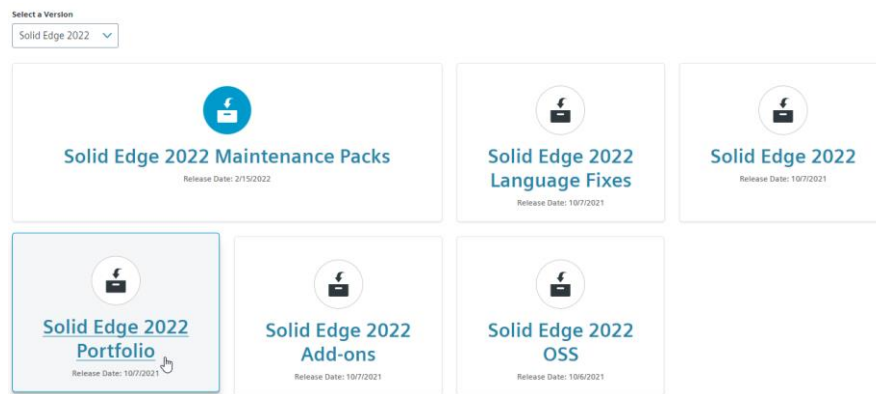
This will download you licence file and will be called ugnx2007.dat and should contain both Solid Edge and Solid Edge CAM Pro licences. The products are listed at the bottom of the file and will look something like this:

#	LICENSE	PRODUCT	QTY	DESCRIPTION	QTY	FEATURE	NAME
#	SE290		1	SE Classic FL	1	solidedgeclassic	
#	SE401		1	Solid Edge Included CAM			
#					1	3d_to_2d_flattener	
#					1	assemblies	
#					1	cam_base	
#					1	cavity_milling	
#					1	dxf_to_ug	
#					1	dxfdwg	
#					1	gateway	
#					1	gmc	
#					1	graphical_tool_path	
#					1	grip_execute	
#					1	iges	
#					1	nc_external_program	
#					1	nc_wizard_builder	
#					1	nx_cam_deburr_planar	
#					1	nx_post_config_adv	
#					1	planar_milling	
#					1	probe	
#					1	pstudio_auth	
#					1	pstudio_cons	
#					1	pv_ugdatagenerator	
#					1	shop_doc	
#					1	sla_3d_systems	
#					1	step_ap203	
#					1	step_ap214	
#					1	tol_cavity_milling	
#					1	ug_holemaking	
#					1	ug_kf_execute	
#					1	ug_post_exe	
#					1	ug_post_kinematics	
#					1	ug_post_mill	
#					1	ug_smart_models	
#					1	ug_to_dxf	
#					1	ug_to_vericut	
#					1	ug_visualize	
#					1	ugopen_menuscript	

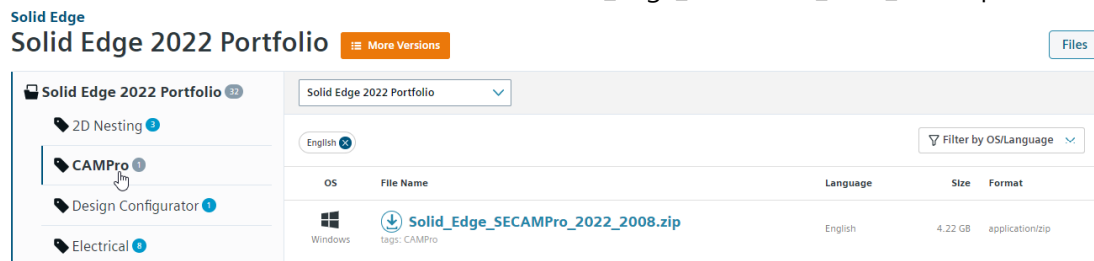
Step 2 – Download the SE CAM Pro software

Go to the Siemens downloads page - <https://support.sw.siemens.com/en-US/product/246738425/downloads>

Set the version to Solid Edge 2022 and select Solid Edge 2022 portfolio.



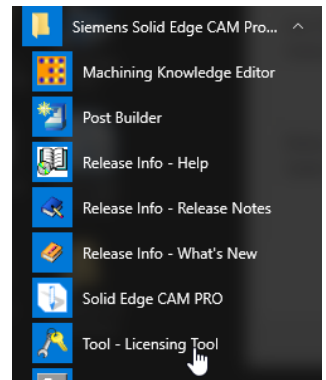
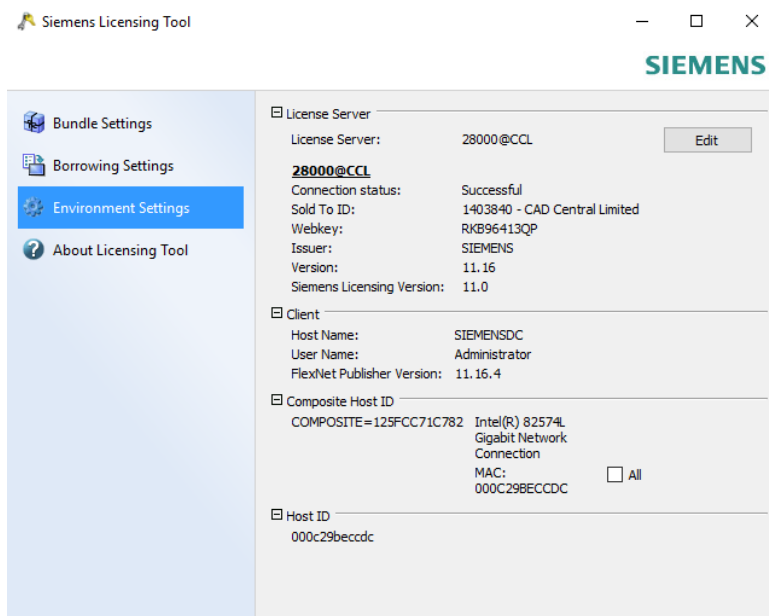
Select CAMPro from the list on the left and download Solid_Edge_SECAMPro_2022_2008.zip



Once download, run and install.

Step 3 – SEC CAM Pro Licensing

The CAM Pro installation will likely install a SPLM Licence server (which is used when the software is purchased as stand-alone), but will not be used when using as part of the Solid Edge bundle. It will also create a system environment variable called SPLM_LICENSE_SERVER. As part of the tools available in the windows start, Siemens Solid Edge CAM Pro, there is an option called “Tool – Licensing Tool” which is used to configure your licence.

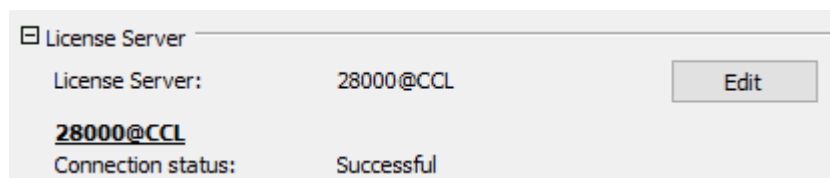


3a – Floating Licensing

You need to make sure you know which computer is acting as your licence server. This is found in the licence file as the first piece of text after the word SERVER (CCL in the example below)

```
#####
SERVER CCL COMPOSITE=8DA2073160DC 28000
VENDOR ugs1md
```

On the Environment Settings option in the Licensing Tool, the licence server should be 28000@<server>, where server is the name of the licence server found in the licence file. If not, click the Edit button and change it. The connection status should be listed as Successful.



If you have changed this and it is still not returning a successful status, then go into the system environment variables and make sure the SPLM_LICENSE_SERVER is showing the same

SPLM_LICENSE_SERVER 28000@CCL

3b – Node Locked Licencing

With node locked licences, you need to go into the Licensing Tool and click on Environment Settings. Click the Edit button and change the value to the path and filename of the licence file (ie. C:\Program Files\Siemens\Solid Edge 2021\Preferences\SELicense.dat). As with the floating option, you should see the status as Successful.

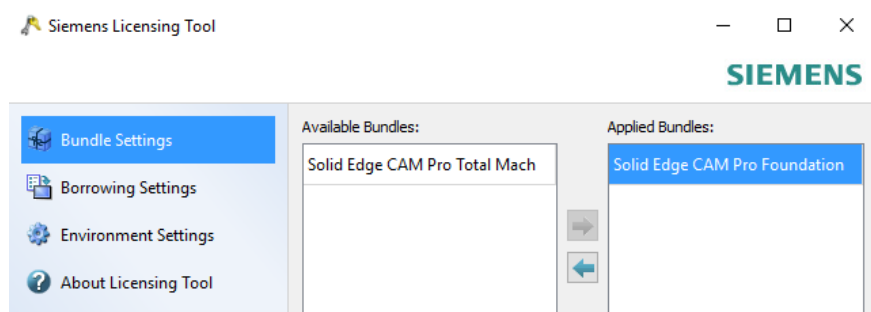
If you have changed this and it is still not returning a successful status, then go into the system environment variables and make sure the SPLM_LICENSE_SERVER is showing the same as what you have just set.

3c – Cloud Licencing

Cloud licencing does not support the use of CM Pro at this stage. If you have a cloud licence and wish to use CAM Pro, you will need to contact your support provider to arrange switching your licence back to node locked.

Step 4 – Setting up the Bundles

Once you have a successful status, go into the Bundle Settings option of the licensing tool. You should see there the CAM licencing options you have available. Make sure that any options you have are moved into the available bundles section



Troubleshooting

If all of the above options have still not fixed your problems, run the registry editor (Run Regedit) and open

HKEY_CURRENT_USER-SOFTWARE-Siemens_PLM_Licensing

And ensure the NX_SERVER is set to your choice of licencing:

